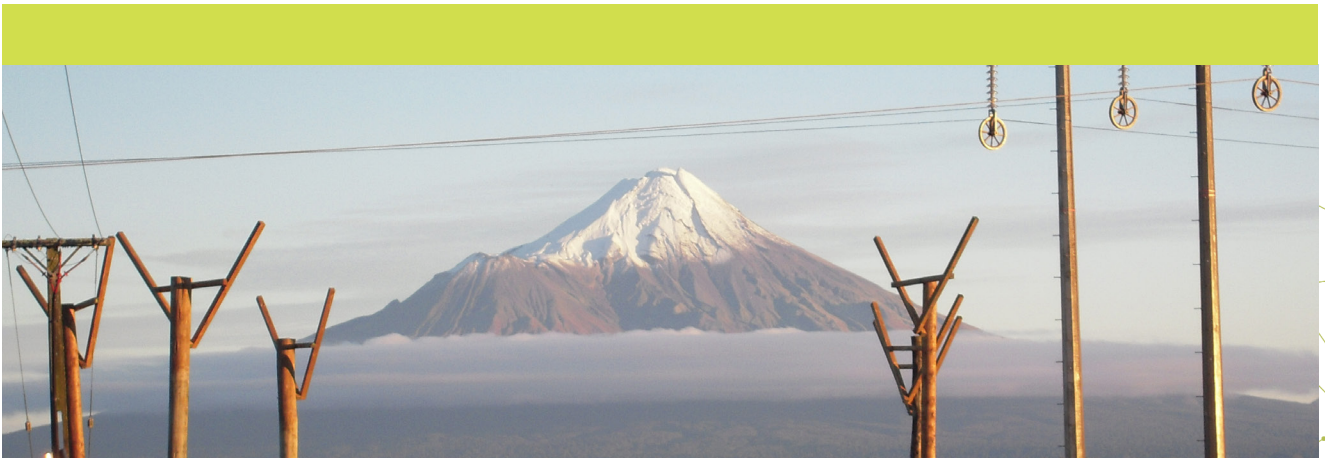


Environmental Statement



Omexom is committed to being environmentally responsible by protecting the natural environment, biodiversity, New Zealand's historic land heritage and our communities through minimising our work-related impact and reducing 40% of our carbon emissions by 2030.

Leadership

- Recognising NZ's natural environment, biodiversity and land heritage is important to our future and ensure our business decisions reflect this.
- Providing effective planning and resources to minimise our work-related impact on the land.
- Establishing measurable objectives and targets to monitor environmental performance and ensure our actions and behaviours are aligned to these objectives.
- Fostering continuous improvement aimed at reducing our environmental impact.
- Demonstrating awareness of and adherence to legislative and industry standards, and any other formal voluntary agreements.
- Holding management at all levels responsible for environmental performance.
- Maintaining good practice environmental management systems.
- Maintaining accurate reporting and recording of environmental events and our carbon footprint.
- Providing clear communication to our workers concerning environmental matters.
- Seeking out employee engagement and participation on environmental matters.

People

- Monitoring our workers are competent in environmental practices and exercise reasonable care in their work activities.
- Fostering our employee's awareness of the overall environmental impact of our work.
- Providing employees with adequate training, information and instruction on environmental risks associated with their work.
- Supporting our employees if they stop work due to environmental concerns.
- Consulting with employees on our environmental procedures to ensure they are current and relevant.

Risk

- Ensuring our environmental risks controls are implemented effectively and understood by our workers.
- Monitoring and reviewing our risk management performance to minimise our impact on the natural environment and the community through: avoiding uncontrolled discharges; reducing unnecessary energy and water consumption; reducing the generation of waste; and preventing pollution.
- Being prepared for our emergency response scenarios.

MORNEZ GREEN
Managing Director